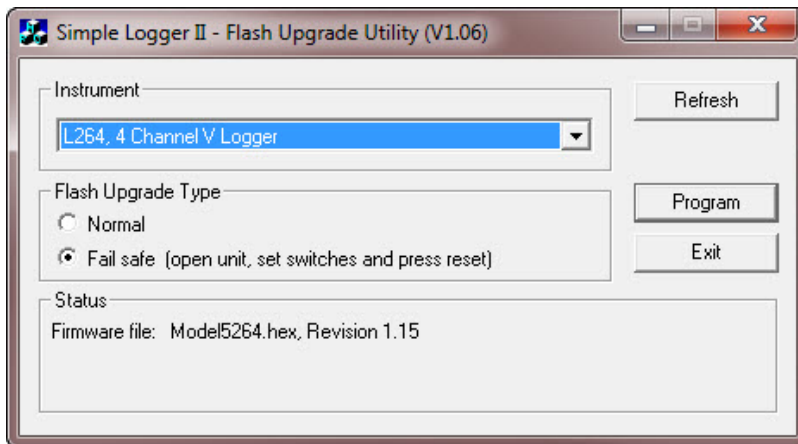


Using the Simple Logger II-Flash Upgrade Utility Program AEMC® Simple Logger II Models

Step 1: Download the firmware SLIIFlashUp116.exe or SLIIFlashUp116.zip to your desktop

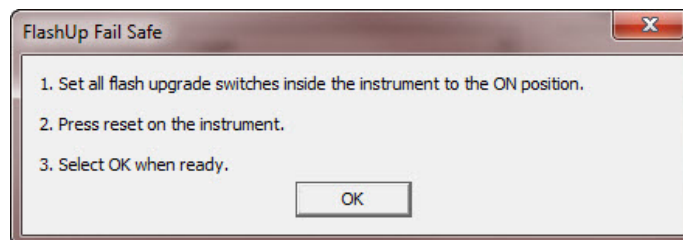
Step 2: Connect your Simple Logger II instrument to the computer using an USB cable. (For Bluetooth models you must remove the battery cover to access the USB connector)(Fresh batteries should be installed prior to upgrade.) **Note: Any data in memory may be lost and should be saved prior to upgrading.**

Step 3: Double click the exe file to launch the upgrade utility. A folder named SLIIFlashUp116 will be created. If the .zip file was downloaded then unzip to desktop and run FlashUp.exe from within the created folder SLIIFlashup116



Step 4: The Model number will appear in the drop-down list if the instrument was detected. Click “Refresh” if the list is empty. Note: The firmware file will be automatically selected for the attached model.

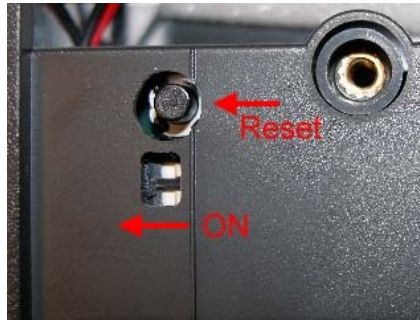
Step 5: When upgrading to version 1.16 from 1.13 or lower it is necessary to perform a “Fail Safe” upgrade. Click on the “Program” button to start the firmware upgrade process. The following message will appear. Select “OK” once the steps are completed. Note: If the program counter does not appear it may be necessary to press the reset button again. Refer to below captures to locate the reset and flash upgrade switches for various models in the Simple Logger II product line.



Step 6: Locate the flash upgrade switches and reset switch as shown below. Set all switches to the “ON” position and press reset.

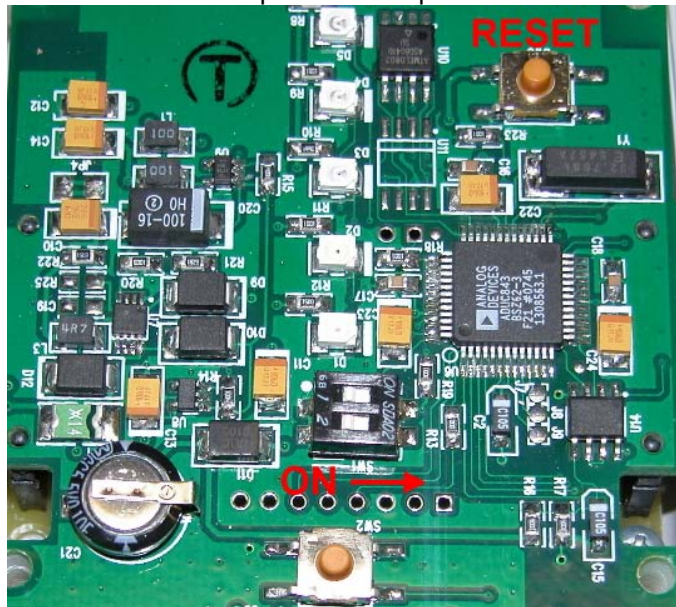
(Model CL601 Only)

Open the battery compartment and turn both DIP switches to the “ON” position then press the reset button.



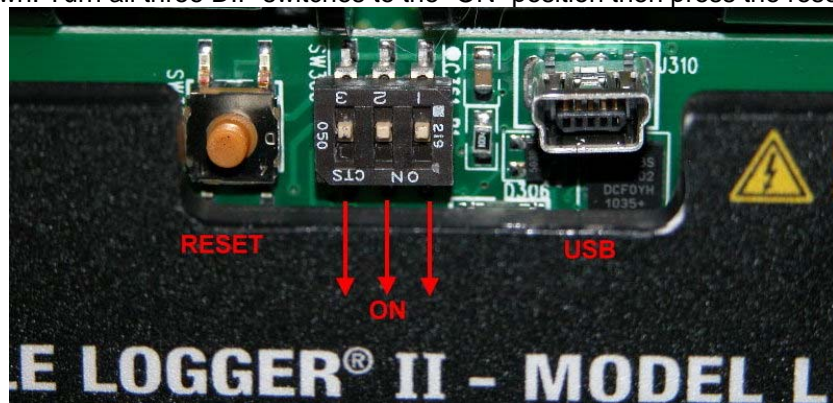
(One and two channel models)

Open the battery compartment and remove the four screws holding the two halves of the instrument together. Locate the two DIP switches on the exposed PCB and turn both DIP switches to the “ON” position then press the reset button.

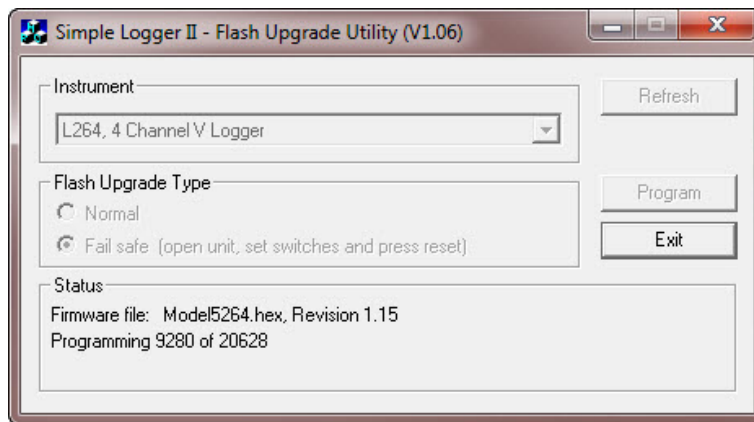


4 Channel Models

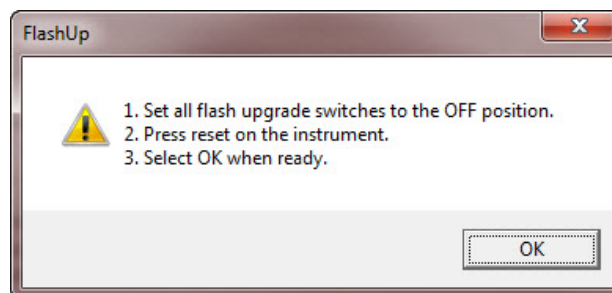
Remove the battery cover to expose the USB connector, flash upgrade switches and reset switch as shown. Turn all three DIP switches to the “ON” position then press the reset button



Step 8: Select OK to start loading the firmware into the instrument. This will take about a minute. During this process you should see the Programming count increase. See below:



Step 9: Once completed the following message will appear. Switch all of the DIP switches to the off position and press reset.



Step 10: Assemble the unit in the reverse order.

Firmware Upgrade is complete