

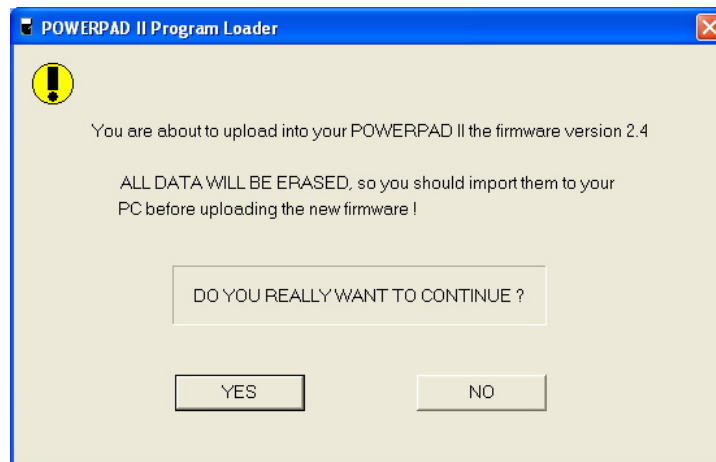
## Using the Ploader Utility Program to Upgrade the AEMC<sup>®</sup> Model 8335 Firmware Version 2.4

**Step 1:** Unzip the PowerPadIIFWV24.zip to your desktop and a folder will be created called PowerPadIIFWV24.

**Step 2:** Double-click to open the folder.

**Step 3:** Connect the PowerPad<sup>®</sup> II Model 8335 to the USB port using the USB cable included with the instrument.

**Step 4:** Double-click on the PloaderPowerpadII.exe file and a window will pop up.



**Step 5:** Select YES to continue.

**Step 6:** Select or type the communications port you wish to use and press Start Firmware Upload.

To locate the instruments com port:

### Windows XP:

- 1: Click on "START" and select Settings > Control Panel > System.
- 2: Select the "Hardware" tab.
- 3: Select "Device Manager".
- 4: Expand the "Ports (COM & LPT)" by clicking the "+" symbol.
- 5: Note the com port number assigned to the instrument. USB Serial Port(COMx).

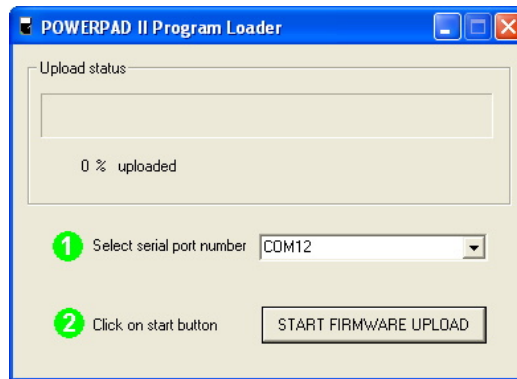
### Windows Vista:

- 1: Click on "START" and select Control Panel > System > Device manager.
- 2: Expand the "Ports (COM & LPT)" by clicking the "+" symbol.
- 3: Note the com port number assigned to the instrument. USB Serial Port(COMx).

### Windows 7:

- 1: Click on "START" and select Control Panel.
- 2: Click "Hardware and Sound" and select "Devices and Printers".
- 3: Expand the "Ports (COM & LPT)" by clicking the "+" symbol.
- 4: Note the com port number assigned to the instrument. USB Serial Port(COMx).

**NOTE:** The com port for the instrument will be specified after the "USB Serial Port (Com#)" where # is the com port number assigned. If the com port is not available from the drop down list then the com port # can be entered directly into the Com field as Com## (where ## is the assigned com port number for the instrument).

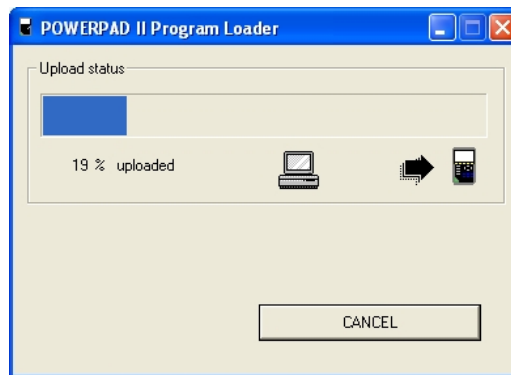


**Step 7:** The next window will ask to cycle the power of the PowerPad II.

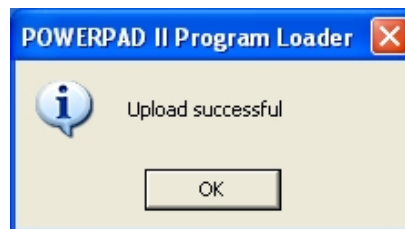


**Step 8:** Once the Powerpad II Model 8335 has fully started up then select OK to continue.

**Step 9:** During upgrade the screen of the Model 8335 should go black with a status bar at the bottom of the screen.



**Step 10:** The instrument will automatically turn off when the firmware is loaded and the memory is erased. The window below will appear if successful. Upgrade should only take a few minutes.



**Firmware update is complete.**